

Kamishibai (paper drama)

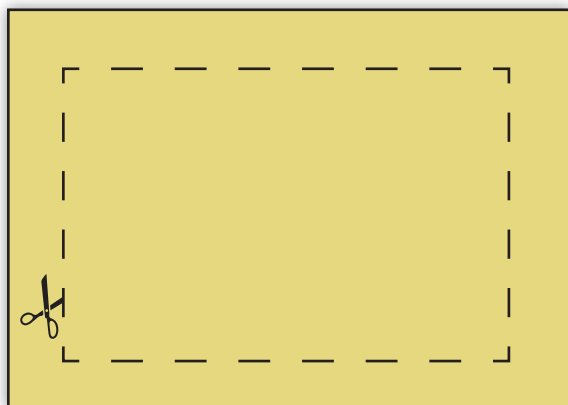
A step-by-step guide to making a Kamishibai stage.

To make your Kamishibai stage you will need:

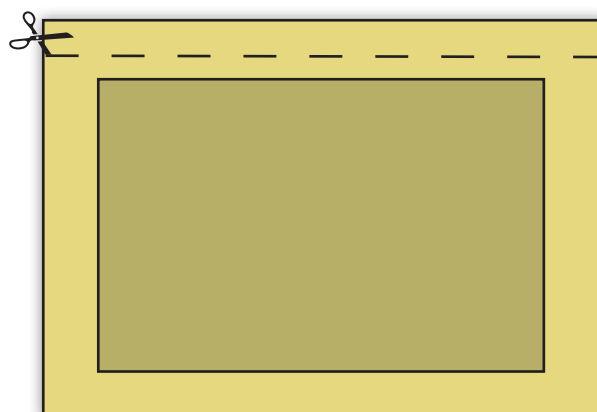
- 1 hardback A4 envelope
- 2 sheets of A4 card for side supports
- 1 sheet of A4 card for stage top (optional)
- Glue or sticky tape
- Paint
- Items to decorate stage.

Use the templates provided to make your card side supports and your stage top.

- 1** Cut a window in the A4 hardback envelope on the paper side (it may be easier for an adult to do this in advance, using a craft knife).

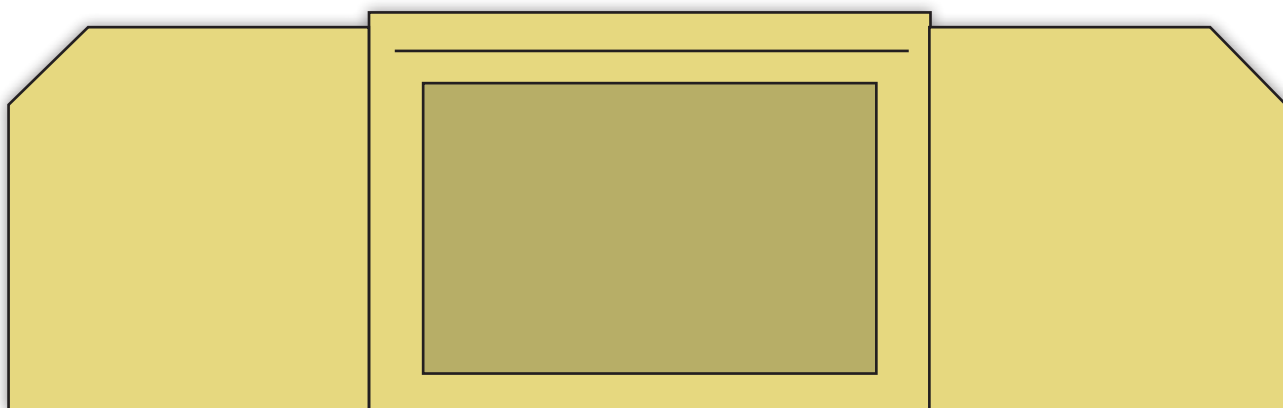


- 2** Cut a slot in the top all the way along from left to right. You should be able to get an A4 sheet of paper in there easily.

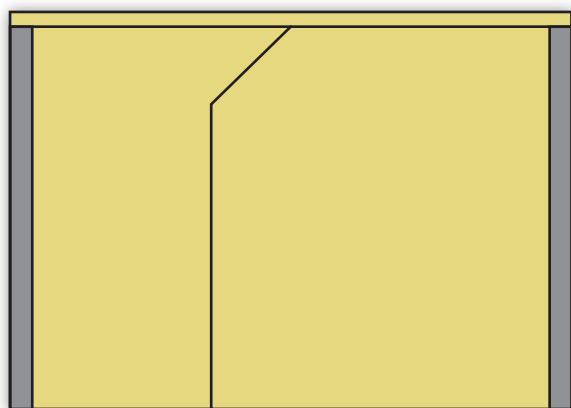


Kamishibai (paper drama)

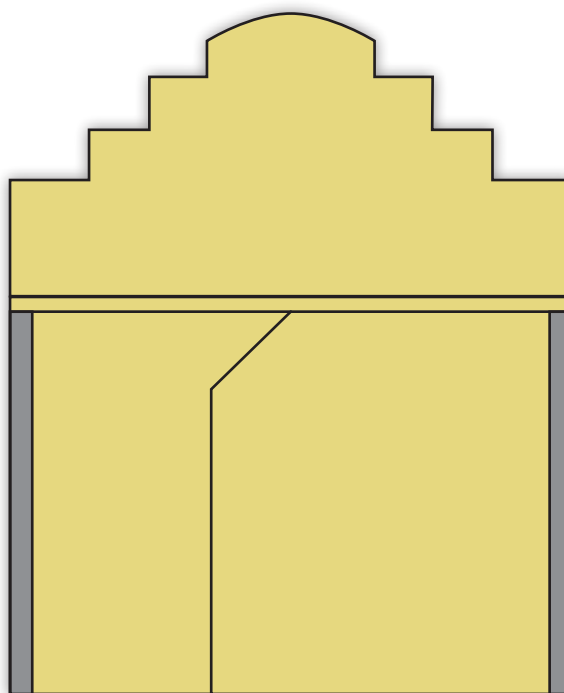
3 Make the left and right side supports out of card using the template provided.



4 Lay the cardboard sides over the front of the A4 envelope, covering the window that you have cut out. Secure the sides to the back of the envelope with glue or tape. Using this method will ensure that the stage will fold away neatly.

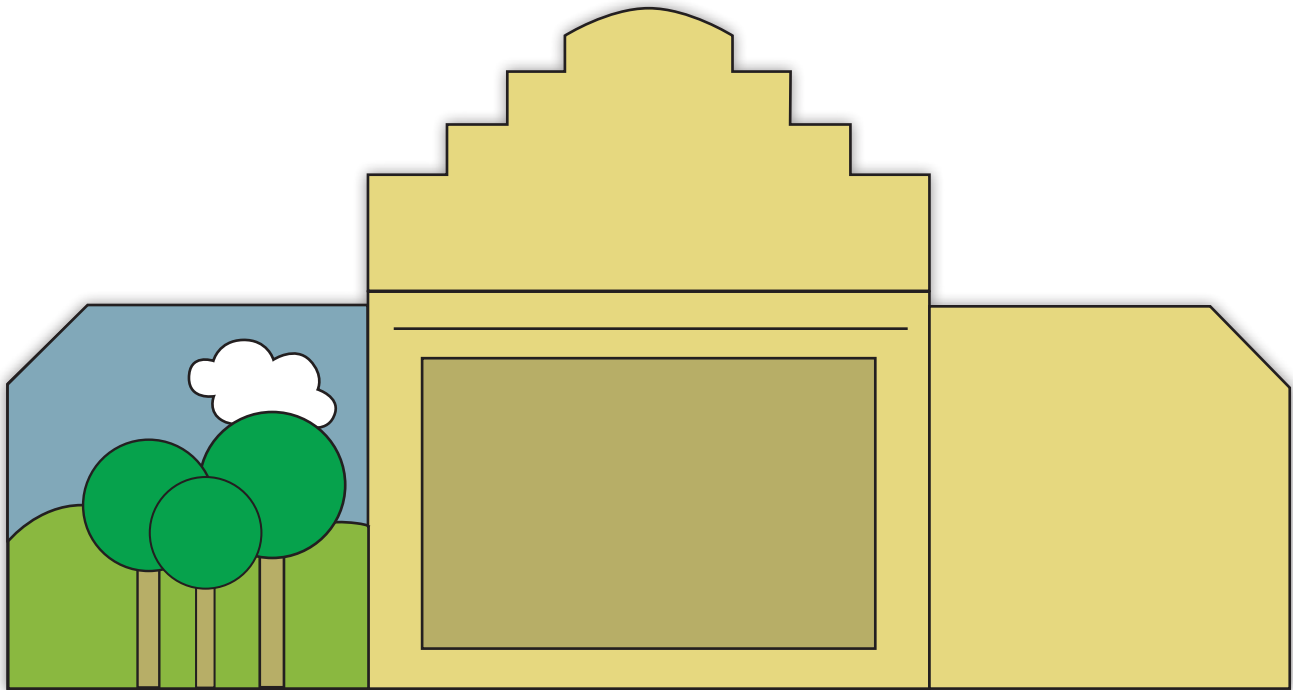


5 Secure the top to the FRONT of the envelope, being careful not to glue over the A4-size slit.



Kamishigai (paper drama)

6 Let your imagination run riot and decorate the stage.

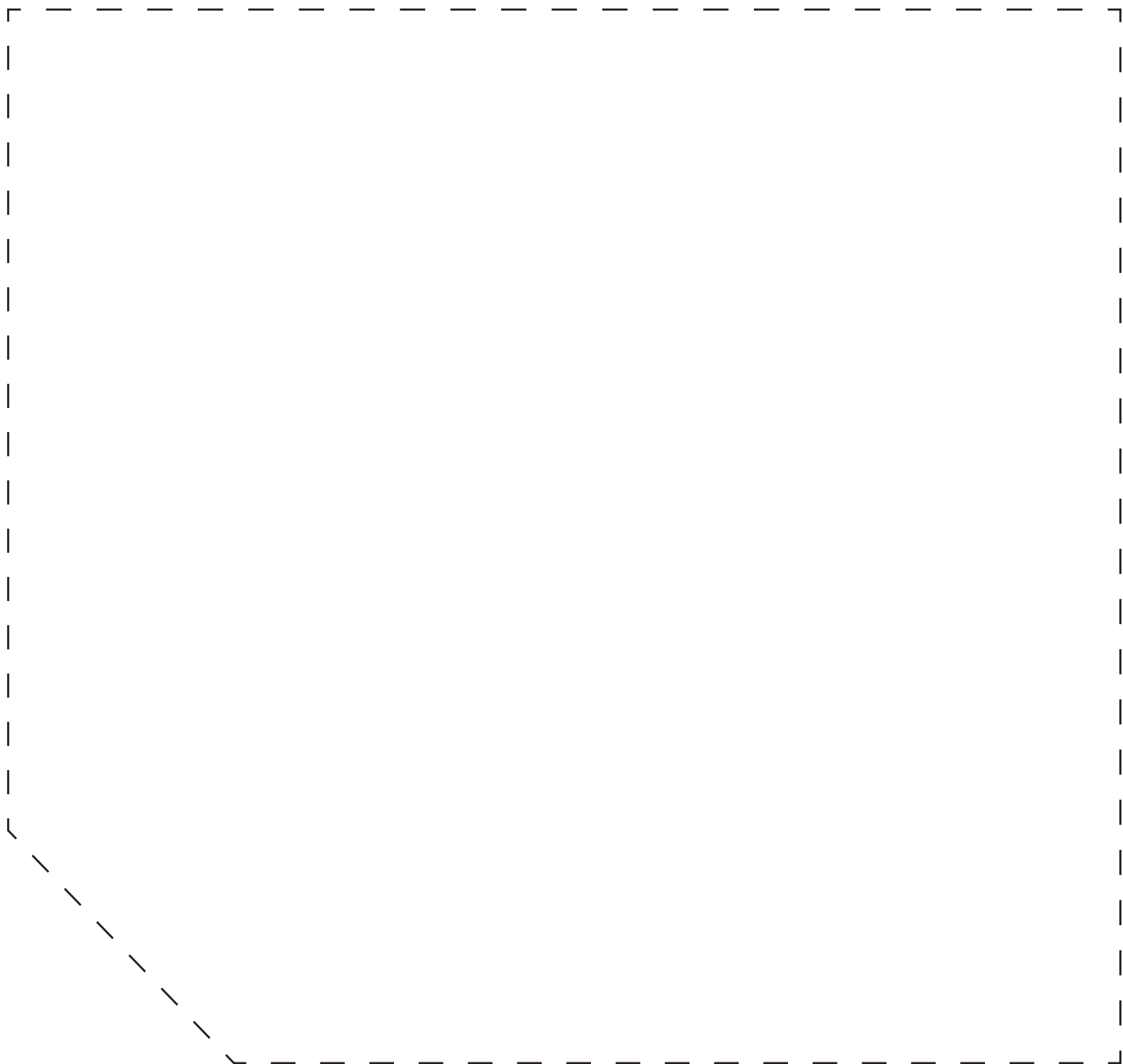


Only the main frame, side supports and stage top need to be painted and decorated. The audience will not see the back.

Kamishigai (paper drama)

Templates

Cut two for the side supports.



Kamishibai (paper drama)

Templates

Cut one for the top.

